

Pictured above are some of the anatomical structures related to Brainstem Care

Brainstem∞Care is unique to our practice.

We developed it to help our son overcome a brain injury at birth. To read more about our story and how Brainstem Care can help you and your loved ones, please visit our website [www.marshallspinalcare.com](http://www.marshallspinalcare.com) and Facebook page. Or, better yet, give us a call/text to schedule an appointment to find out how Brainstem∞Care can help.

Consultations are complimentary.



#### Office Hours

Monday: 8:45-11:45 & 1:45-4:45  
 Tuesday: 8:45-11:45 & 1:45-4:45  
 Thursday: 8:45-11:45 & 1:45-4:45  
 Friday: 8:45-11:45

## BRAINSTEM∞CARE

We invite you to experience Brainstem Care for yourself! At Marshall Spinal Care, we provide an all-inclusive treatment to help whole your body heal, recover and strengthen from acute, chronic, incurable, undiagnosed or terminal medical conditions.

Please visit [marshallspinalcare.com](http://marshallspinalcare.com) for a list of conditions helped by Brainstem Care©™

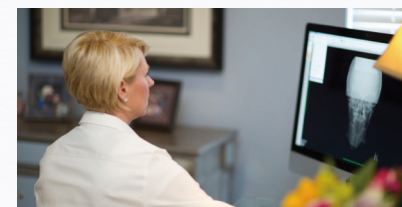


**ADULT NEW PATIENT FEE: \$600.00\***

Includes: Initial Medical History, Physical Exams, Pre X-ray scans, Initial Brainstem Care Treatment, Post X-ray scans as well as your Medical Report of Findings.

Payment Plans are available upon request\*

**ADDITIONAL SERVICES PROVIDED:**

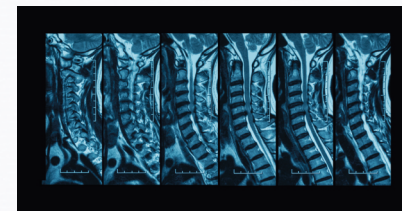


**ON-SITE HIGH FREQUENCY DIGITAL X-RAYS**

**SENIOR NEW PATIENT FEE: \$500.00\***

Includes: Initial Medical History, Physical Exams, Pre X-ray scans, Initial Brainstem Care Treatment, Post X-ray scans as well as your Medical Report of Findings.

Payment Plans are available upon request\*



**COMPREHENSIVE INTERPRETATIONS FOR MRI'S, CT'S, ULTRASOUNDS AND LABS AS WELL AS MEDICAL REFERRALS AS NEEDED**

**CHILD NEW PATIENT FEE: \$400.00\***

Includes: Initial Medical History, Physical Exams, Pre X-ray scans, Initial Brainstem Care Treatment, Post X-ray scans as well as your Medical Report of Findings.

Payment Plans are available upon request\*



**COMPLIMENTARY ANALYSIS FOR PRESCRIPTION VITAMINS & SUPPLEMENTS**